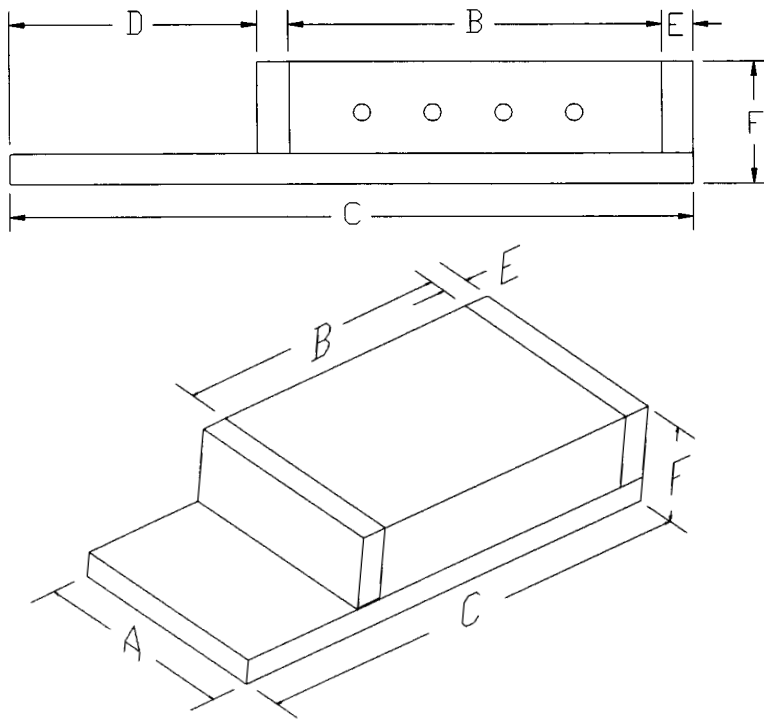


# FLANGE MODEL SLIDES

# ALM



STANDARD MOUNTING HOLES AVAILABLE

Detail Dimensions Pg. 42 & 43

**PLEASE DESIGNATE MATERIAL**  
 A = ALUMINUM  
 C = CAST IRON

MODEL #	A WIDTH	B APL	C FPL	D TRAVEL	C OAL	E EP	F HEIGHT	RAILSET	WEIGHT (LBS)		MAX CC (LBS)
									A	C	
F(A/C)2-3-1	2.0 50.8	3.0 76.2	4.5 114.3	1.0 25.4	4.5 114.3	0.25 6.4	0.98 25.0	RS118-02-07-C	0.9	1.8	174
F(A/C)2-4-1	2.0 50.8	4.0 101.6	5.5 139.7	1.0 25.4	5.5 139.7	0.25 6.4	0.98 25.0	RS118-03-12-C	1.1	2.4	348
F(A/C)2-6-2	2.0 50.8	6.0 152.4	8.5 215.9	2.0 50.8	8.5 215.9	0.25 6.4	0.98 25.0	RS118-04-15-C	1.4	3.5	406
F(A/C)3-4-1	3.0 76.2	4.0 101.6	5.5 139.7	1.0 25.4	5.5 139.7	0.25 6.4	1.25 31.7	RS118-03-12-C	1.8	4.6	348
F(A/C)3-5-1	3.0 76.2	5.0 127.0	6.5 165.1	1.0 25.4	6.5 165.1	0.25 6.4	1.25 31.7	RS118-04-17-C	2.2	5.4	464
F(A/C)3-6-2	3.0 76.2	6.0 152.4	8.5 215.9	2.0 50.8	8.5 215.9	0.25 6.4	1.25 31.7	RS118-04-15-C	2.7	6.5	406
F(A/C)4-6-1	4.0 101.6	6.0 152.4	7.5 190.5	1.0 25.4	7.5 190.5	0.25 6.4	1.44 36.5	RS118-05-22-C	3.9	9.8	638
F(A/C)4-8-2	4.0 101.6	8.0 203.2	10.5 266.7	2.0 50.8	10.5 266.7	0.25 6.4	1.44 36.5	RS118-06-25-C	4.8	13.1	696
F(A/C)4-10-2	4.0 101.6	10.0 254.0	12.5 317.5	2.0 50.8	12.5 317.5	0.25 6.4	1.44 36.5	RS118-08-35-C	6.0	15.5	986
F(A/C)4-12-3	4.0 101.6	12.0 304.8	15.5 393.7	3.0 76.2	15.5 393.7	0.25 6.4	1.44 36.5	RS118-09-37-C	7.3	18.7	1044
F(A/C)6-8-2	6.0 152.4	8.0 203.2	10.5 266.7	2.0 50.8	10.5 266.7	0.25 6.4	2.0 50.8	RS236-06-10-C	10.8	28.2	1200
F(A/C)6-12-4	6.0 152.4	12.0 304.8	16.5 419.1	4.0 101.6	16.5 419.1	0.25 6.4	2.0 50.8	RS236-08-12-C	15.8	40.7	1440
F(A/C)6-16-6	6.0 152.4	16.0 406.4	22.5 571.5	6.0 152.4	22.5 571.5	0.25 6.4	2.0 50.8	RS236-10-14-C	20.9	54.8	1680