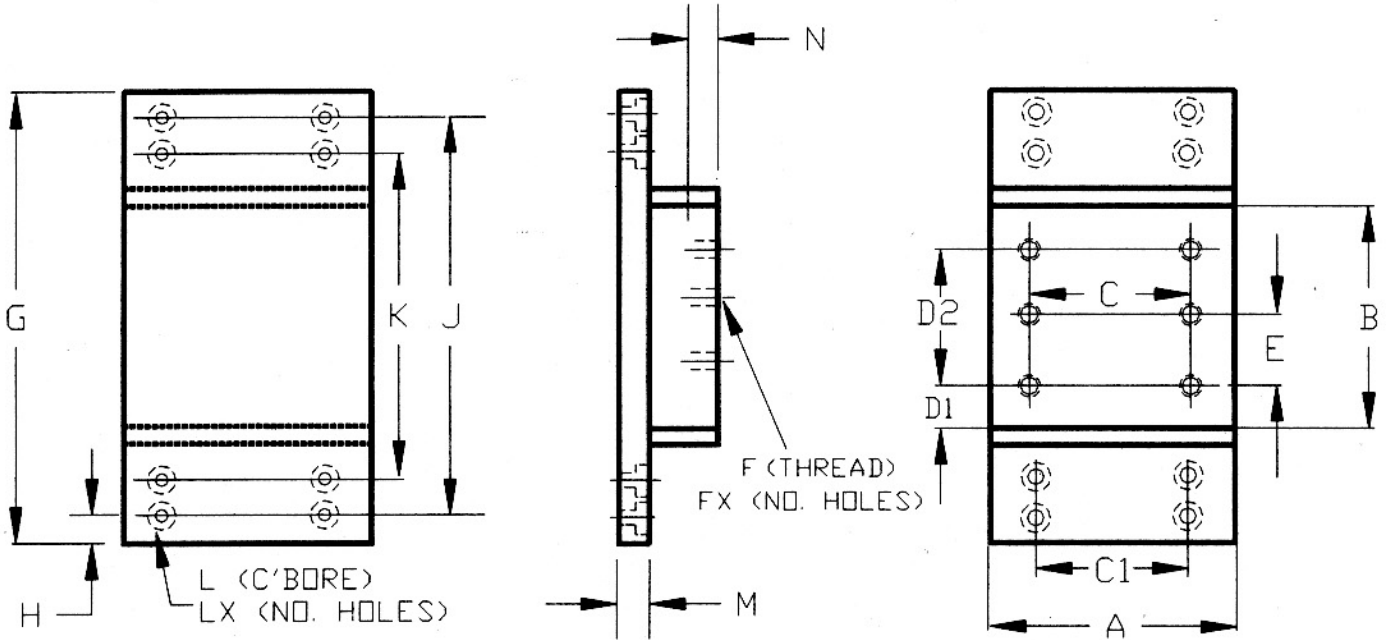


**AMERICAN LINEAR MANUFACTURERS
STANDARD HOLE PATTERN - F MODEL
ENGLISH / METRIC TABLE**



MODEL #	A	B	C	C1	D1	D2	E	F	FX	G	H	J	K	L	LX	M	N
F(A/C)2-3-1		3.00 (76.2)			0.250 (6.35)	2.500 (63.5)	1.250 (31.7)		6	4.50 (114.3)	0.250 (6.35)	4.000 (101.6)	-		4		
F(A/C)2-4-1	2.00 (50.8)	4.00 (114.3)	1.000 (25.4)	1.500 (38.1)	0.250 (6.35)	3.500 (88.9)	1.750 (44.4)	#8-32 (M4)	6	5.50 (139.7)	0.250 (6.35)	5.000 (127.0)	-	#8 (M4)	4	.205 (5.21)	.330 (8.38)
F(A/C)2-6-2		6.00 (152.4)			0.500 (12.7)	5.000 (127.0)	2.500 (63.5)		6	8.50 (215.9)	0.500 (12.7)	7.500 (190.5)	-		4		
F(A/C)3-4-1		4.00 (114.3)			0.250 (6.35)	3.000 (76.2)	1.500 (38.1)		6	5.50 (139.7)	0.250 (6.35)	5.000 (101.6)	-		4		
F(A/C)3-5-1	3.00 (76.2)	5.00 (127.0)	1.500 (38.1)	2.500 (63.5)	0.250 (6.35)	4.000 (101.6)	2.000 (50.8)	#10-32 (M4)	6	6.50 (165.1)	0.250 (6.35)	6.000 (127.0)	-	#10 (M5)	4	.405 (10.29)	.334 (8.48)
F(A/C)3-6-2		6.00 (152.4)			0.500 (12.7)	5.000 (127.0)	2.500 (63.5)		6	8.50 (215.4)	0.500 (12.7)	7.500 (190.5)	-		4		
F(A/C)4-6-1		6.00 (152.4)			0.250 (6.35)	5.000 (127.0)	2.500 (63.5)		6	7.50 (190.5)	0.500 (12.7)	6.500 (165.1)	-		4		
F(A/C)4-8-2	4.00 (101.6)	8.00 (203.2)	2.500 (63.5)	3.000 (76.2)	0.500 (12.7)	7.000 (177.8)	3.500 (88.9)	#10-32 (M4)	6	10.50 (266.7)	1.000 (25.4)	8.500 (215.4)	-	1/4 (M5)	4	.477 (12.11)	.374 (9.50)
F(A/C)4-10-2		10.00 (254.0)			0.500 (12.7)	9.000 (228.6)	4.500 (114.3)		6	12.50 (317.5)	1.000 (25.4)	10.500 (266.7)	-		4		
F(A/C)4-12-3		12.00 (304.8)			1.000 (25.4)	10.000 (254)	3.500 (88.9)		8	15.50 (393.7)	1.500 (25.4)	12.500 (317.5)	-		4		
F(A/C)6-8-2		8.00 (203.2)			1.000 (25.4)	6.000 (152.4)	-		6	10.50 (266.7)	1.000 (25.4)	8.500 (215.9)	-		4		
F(A/C)6-12-4	6.00 (152.4)	12.00 (304.8)	3.500 (88.9)	5.000 (127.0)	1.000 (25.4)	10.000 (254)	5.000 (127)	1/4-20 (M5)	6	16.50 (419.1)	2.000 (50.8)	12.500 (317.5)	-	5/16 (M6)	4	.804 (20.42)	.444 (11.28)
F(A/C)6-16-6		16.00 (406.4)			1.500 (38.1)	14.000 (355.6)	3.500 (88.9)		10	22.50 (571.5)	1.000 (25.4)	20.500 (520.7)	12.500 (317.5)		8		

DIMENSIONS IN INCHES / (MILLIMETERS)
 SIZE DIMENSIONS ± .010 / (.25MM)
 HOLE CENTER TO CENTER ± .005 / (.13MM)

REV A
 4/98