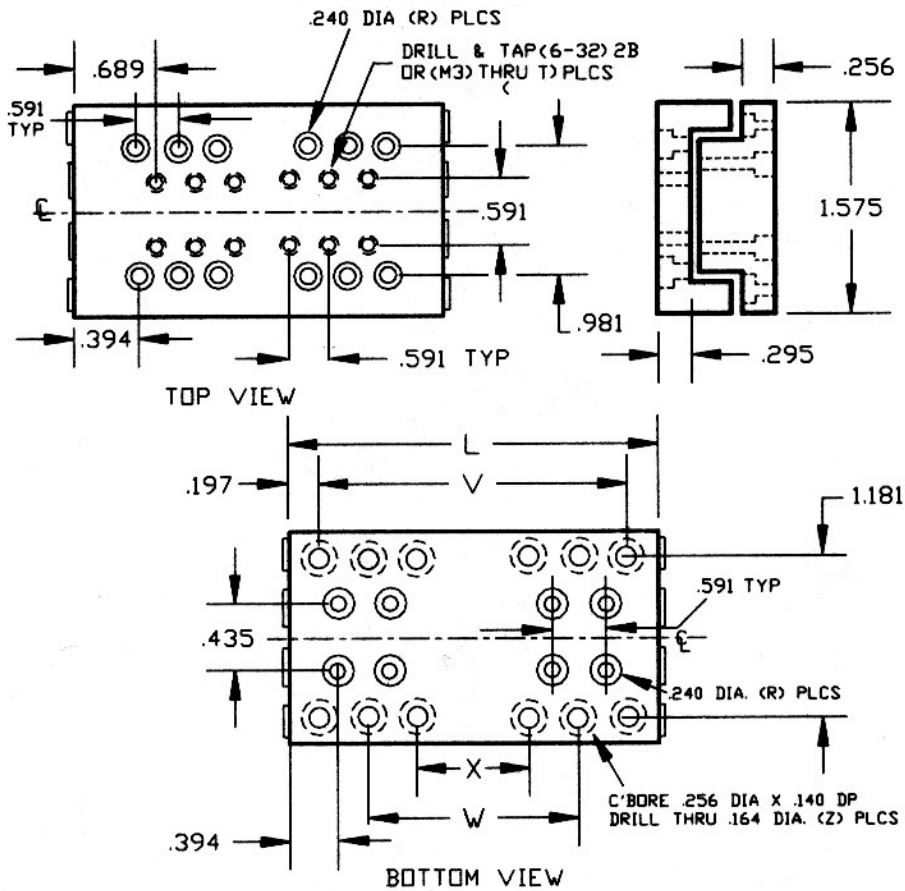


**AMERICAN LINEAR MANUFACTURERS
STANDARD HOLE PATTERN - X1 SERIES
ENGLISH / METRIC**



MODEL	L	R	T	V	W	X	Z
X(A/S)1-1-05	1.378 (35.0)	4	2	.984 (25.0)	-	-	4
X(A/S)1-2-1	1.969 (50.0)	6	4	1.575 (40.0)	-	-	4
X(A/S)1-25-15	2.559 (65.0)	8	6	2.165 (55.0)	-	-	4
X(A/S)1-3-2	3.150 (80.0)	10	8	2.756 (70.0)	1.575 (40.0)	-	8
X(A/S)1-35-25	3.740 (95.0)	12	10	3.346 (85.0)	2.165 (55.0)	-	8
X(A/S)1-4-3	4.331 (110.0)	14	12	3.937 (100.0)	2.756 (70.0)	-	8
X(A/S)1-5-4	4.921 (125.0)	16	14	4.528 (115.0)	3.346 (85.0)	-	8
X(A/S)1-6-5	6.102 (155.0)	20	18	5.709 (145.0)	4.528 (115.0)	3.346 (85.0)	12
X(A/S)1-7-6	7.283 (185.0)	24	22	6.890 (175.0)	5.709 (145.0)	4.528 (115.0)	16

DIMENSIONS IN INCHES & (MM)
SIZE DIMENSIONS ± .010 / (.25)
HOLE CENTER TO CENTER ± .005 / (.13)