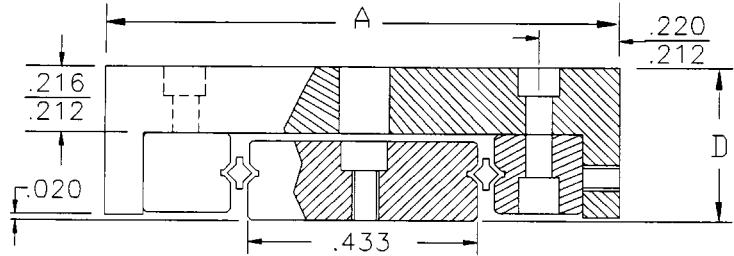
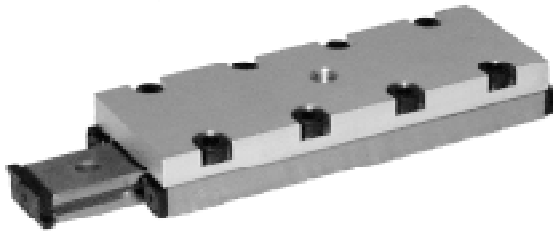


LOW PROFILE MODEL SLIDES LP12 SERIES

ALM

MODEL LP12

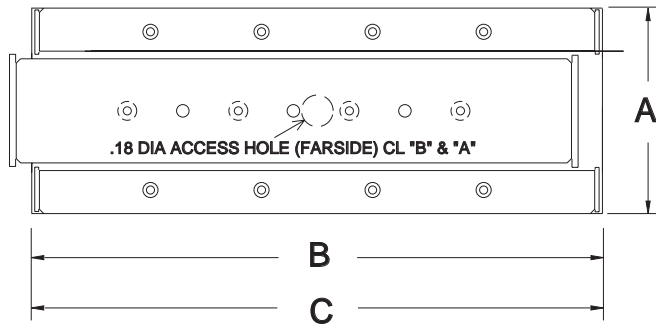


CENTER RAIL IS HARDENED.

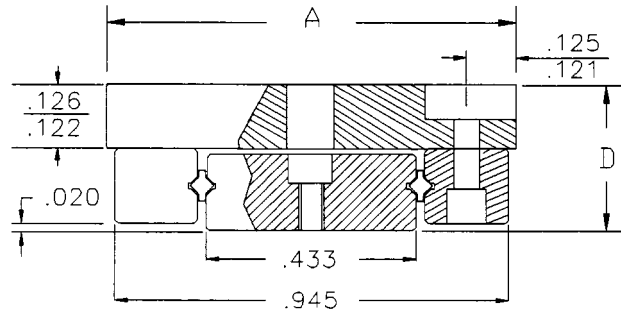
MODEL #	A WIDTH	B PL	TRAVEL	C OAL	D HEIGHT	RAIL SET	WEIGHT		MAX CC (LBS)
							A	S	
LP12-1-05	1.181 30.0	1.378 35.0	0.709 18.0	1.378 35.0	0.47 12.0	DVRS079-10-5P	.20	.33	30
LP12-2-1	1.181 30.0	1.969 50.0	1.181 30.0	1.969 50.0	0.47 12.0	DVRS079-20-07P	.26	.40	30
LP12-25-15	1.181 30.0	2.559 65.0	1.575 40.0	2.559 65.0	0.47 12.0	DVRS079-25-09P	.32	.47	30
LP12-3-2	1.181 30.0	3.150 80.0	1.969 50.0	3.150 80.0	0.47 12.0	DVRS079-30-12P	.39	.54	30
LP12-35-25	1.181 30.0	3.740 95.0	2.362 60.0	3.740 95.0	0.47 12.0	DVRS079-35-14P	.45	.61	40
LP12-4-3	1.181 30.0	4.331 110.0	2.756 70.0	4.331 110.0	0.47 12.0	DVRS079-40-17P	.51	.68	40
LP12-5-4	1.181 30.0	4.921 125.0	3.150 80.0	4.921 125.0	0.47 12.0	DVRS079-50-19P	.57	.75	40

LP12 SERIES MOUNTING PLATES FABRICATED FROM 6061-T6 ALUMINUM WITH CLEAR ANODIZE FINISH.

STANDARD MOUNTING HOLES AVAILABLE



MODEL LP10



LOW PROFILE MODEL SLIDES LP10 SERIES

MODEL #	A WIDTH	B PL	TRAVEL	C OAL	D HEIGHT	RAIL SET	WEIGHT	ASSY MAX CC (LBS)
								20
LP10-1-05	1.000 25.4	1.378 35.0	0.709 18.0	1.378 35.0	0.37 9.5	DVRS079-10-5P	.19	20
LP10-2-1	1.000 25.4	1.969 50.0	1.181 30.0	1.969 50.0	0.37 9.5	DVRS079-20-07P	.25	20
LP10-25-15	1.000 25.4	2.559 65.0	1.575 40.0	2.559 65.0	0.37 9.5	DVRS079-25-09P	.31	20
LP10-3-2	1.000 25.4	3.150 80.0	1.969 50.0	3.150 80.0	0.37 9.5	DVRS079-30-12P	.37	20
LP10-35-25	1.000 25.4	3.740 95.0	2.362 60.0	3.740 95.0	0.37 9.5	DVRS079-35-14P	.43	20
LP10-4-3	1.000 25.4	4.331 110.0	2.756 70.0	4.331 110.0	0.37 9.5	DVRS079-40-17P	.49	20
LP10-5-4	1.000 25.4	4.921 125.0	3.150 80.0	4.921 125.0	0.37 9.5	DVRS079-50-19P	.55	20

LP10 SERIES MOUNTING PLATES FABRICATED FROM C1018 STEEL WITH ELECTROLESS NICKEL PLATING.