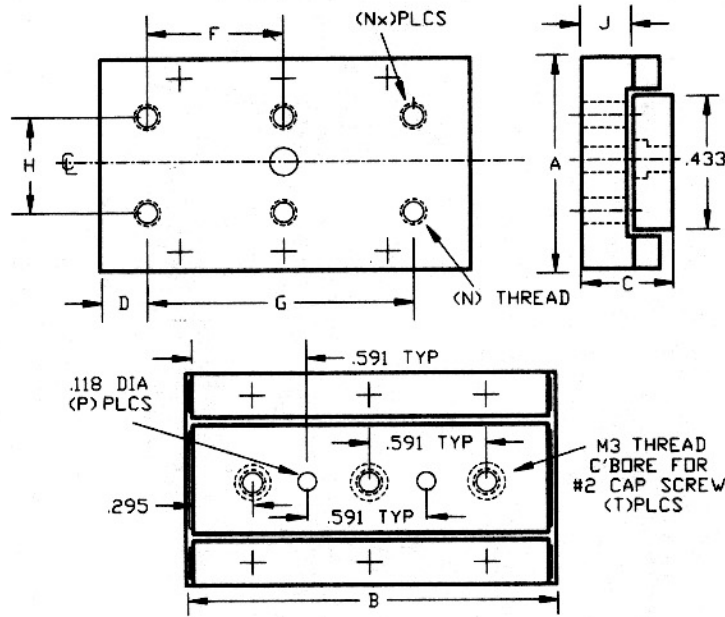


AMERICAN LINEAR MANUFACTURERS

STANDARD HOLE PATTERN - LP10 & LP12 SERIES

ENGLISH / METRIC



MODEL	A	B	C	H	D	F	G	J	Nx	N	P	T
LP12-1-05	1.181 (30.0)	1.378 (35.0)	.472 (12.0)	.866 (22.0)	.138 (3.5)	1.102 (28.0)	-	.200 (5.0)	4	6-32 (M3)	1	2
LP12-2-1		1.969 (50.0)			.138 (3.5)	1.693 (43.0)	-		4		2	3
LP12-25-15		2.559 (65.0)			.689 (17.5)	1.181 (30.0)	-		4		3	4
LP12-3-2		3.150 (80.0)			.689 (17.5)	1.772 (45.0)	-		4		4	5
LP12-35-25		3.740 (95.0)			.689 (17.5)	1.181 (30.0)	2.362 (60.0)		6		5	6
LP12-4-3		4.331 (110.0)			1.280 (32.5)	1.772 (45.0)	-		4		6	7
LP12-5-4		4.921 (125.0)			.689 (17.5)	1.772 (45.0)	3.543 (90.0)		6		7	8
LP10-1-05	1.000 (25.4)	1.378 (35.0)	.375 (9.5)	.748 (19.0)	.138 (3.5)	1.102 (28.0)	-	.125 (3.1)	4	4-40 (M3)	1	2
LP10-2-1		1.969 (50.0)			.138 (3.5)	1.693 (43.0)	-		4		2	3
LP10-25-15		2.559 (65.0)			.689 (17.5)	1.181 (30.0)	-		4		3	4
LP10-3-2		3.150 (80.0)			.689 (17.5)	1.772 (45.0)	-		4		4	5
LP10-35-25		3.740 (95.0)			.689 (17.5)	1.181 (30.0)	2.362 (60.0)		6		5	6
LP10-4-3		4.331 (110.0)			1.280 (32.5)	1.772 (45.0)	-		4		6	7
LP10-5-4		4.921 (125.0)			.689 (17.5)	1.772 (45.0)	3.543 (90.0)		6		7	8

DIMENSIONS IN INCHES & (MM)
SIZE DIMENSIONS ± .010 / (.25)
HOLE CENTER TO CENTER ± .005 / (.13)