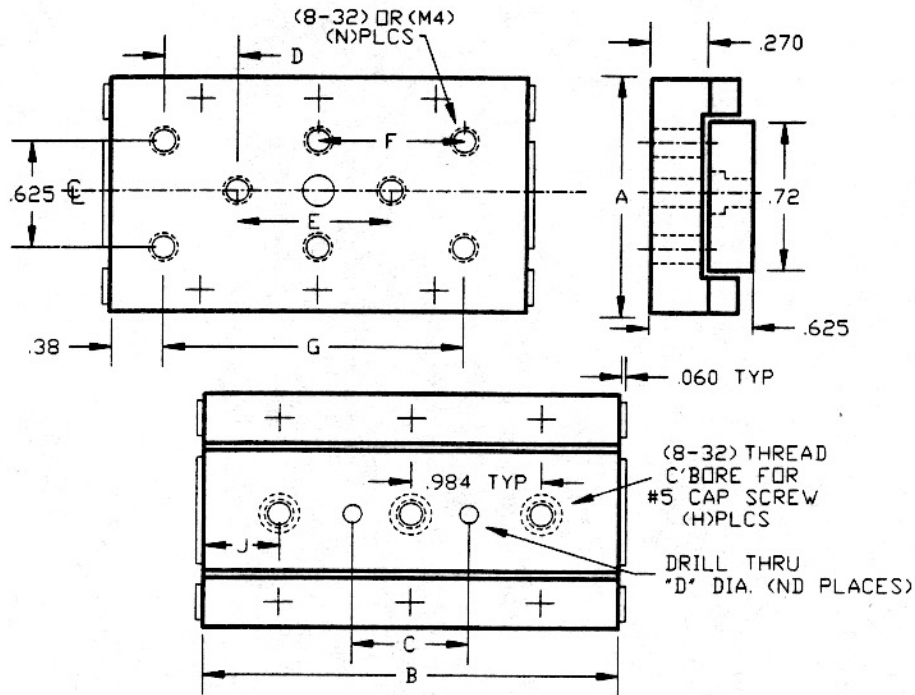


# AMERICAN LINEAR MANUFACTURERS STANDARD HOLE PATTERN - LP15 & LP20 SERIES ENGLISH / METRIC



MODEL	A	B	C	D	N	ND	D	E	F	G	H	J
LP15-2-1	1.48 (37.5)	2.00 (50.8)	.500 (12.7)	.118 (3.00)	6	2	.313 (7.9)	.625 (15.8)	-	1.250 (31.7)	2	.492 (12.5)
LP15-3-2		3.00 (76.2)				2	.563 (14.3)	1.125 (28.5)	1.125 (28.5)	2.250 (57.1)	3	
LP15-4-3		4.00 (101.6)	.984 (24.9)	.157 (4.00)	8	3	.813 (20.6)	1.625 (41.3)	1.625 (41.3)	3.250 (82.5)	4	
LP15-5-4		5.00 (127.0)				4	1.063 (27.0)	2.125 (53.9)	2.125 (53.9)	4.250 (107.9)	5	
LP15-6-5		6.00 (152.4)				5	1.313 (33.3)	2.625 (66.6)	2.625 (66.6)	5.250 (133.3)	6	
LP20-2-1	2.00 (50.8)	2.00 (50.8)	.500 (12.7)	.118 (3.00)	6	2	.313 (7.9)	.625 (15.8)	1.250 (31.7)	-	2	.492 (12.5)
LP20-3-2		3.00 (76.2)				2	.563 (14.3)	1.125 (28.5)	1.125 (28.5)	2.250 (57.1)	3	
LP20-4-3		4.00 (101.6)	.984 (24.9)	.157 (4.00)	8	3	.813 (20.6)	1.625 (41.3)	1.625 (41.3)	3.250 (82.5)	4	
LP20-5-4		5.00 (127.0)				4	1.063 (27.0)	2.125 (53.9)	2.125 (53.9)	4.250 (107.9)	5	
LP20-6-5		6.00 (152.4)				5	1.313 (33.3)	2.625 (66.6)	2.625 (66.6)	5.250 (133.3)	6	

**DIMENSIONS IN INCHES & (MM)  
SIZE DIMENSIONS ± .010  
HOLE CENTER TO CENTER ± .005**

**REV. A  
4/98**