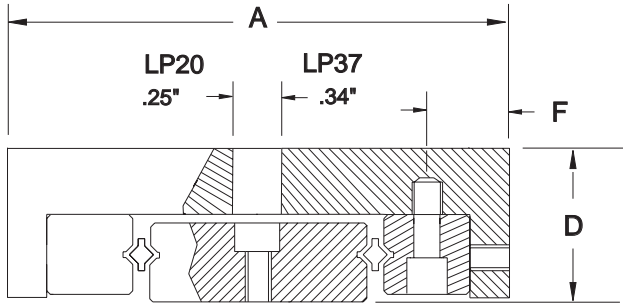


LOW PROFILE SLIDES - 236 SERIES

ALM

MODEL LP20 & LP37



"C" CHANNEL PLATE IS ALUMINUM; CENTER RAIL IS HARDENED

MODEL NO.	A WIDTH	B PLATE LENGTH	TRAVEL	C OAL	D HEIGHT	F	RAILSET	WEIGHT	MAX CC (LBS)
LP37-6-6	3.75 95.2	6.02 152.7	6.0 152.4	6.062 154.0	1.25 31.7		DVRS236-6-8-P	4.42	960
LP37-12-12	3.75 95.2	12.02 305.2	12.0 304.8	12.062 306.3	1.25 31.7	.621	DVRS236-12-16-P	8.85	1925
LP37-24-24	3.75 95.2	24.02 610.0	24.0 609.6	24.062 611.0	1.25 31.7	15.8	DVRS236-24-34-P	17.90	4090
LP37-36-36	3.75 95.2	36.02 914.8	36.0 914.4	36.062 915.9	1.25 31.7		DVRS236-36-51-P	26.75	6010

STANDARD MOUNTING HOLES AVAILABLE.

236 SERIES (6mm) DOUBLE "V" RAIL SETS

MODEL NO.	D	A	B	C	E	F	G	JT	JD	H	L		NT	ND	K	M	P	R	RPR	TRAVEL		MAX CC (lbs)
											in	mm								in	mm	
DVRS236-6	.236	1.625	.749	2.992	1.776	.375	.200	1/4	5	.218	5.906	150	3	2	.984	1.969	1.969	.588	10	5.0	127.0	1200
DVRS236-12											11.812	300	3	2	1.968	3.937	3.937		18	11.0	279.4	2160
DVRS236-24	6.0	41.2	19.0	75.9	45.1	9.5	5.1			5.5	23.621	600	6	5	1.968	3.937	3.937	14.9	36	23.0	584.2	4320
DVRS236-36											35.433	900	9	7	1.968	3.937	3.937		54	35.0	889.0	6480

STANDARD SET INCLUDES (1) DOUBLE 'V' RAIL (2) STANDARD RAILS (2) PLASTIC ROLLER RETAINER STRIPS (6) ENDPieces

