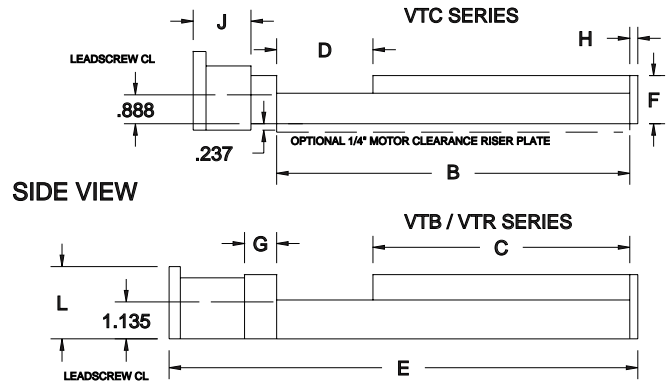
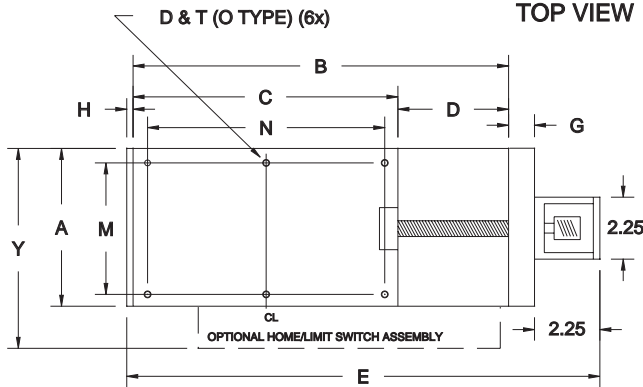


PRODUCT FEATURES

VT 4 SERIES MOTOR READY STAGES

4" WIDTH, 3mm & 6mm LINEAR BEARINGS; NEMA MOTOR MOUNTS & COUPLINGS; ALUMINUM OR CAST IRON



X = 'RB' FOR ROLLED BALLSCREW; 'L' FOR ROLLED LEADSCREW; (.003"/FT LEAD ACCURACY) =====>

MODEL	A	B	C	D	E	F	G	H	J	K	W
VTB(A/C)4- 5- 1/X***	4.0 101.6	5.0 127.0	4.0 101.6	1.0 25.4	8.5 215.9	2.0 50.8	0.99 25.1	0.25 6.4	2.25 57.1	2.25 57.1	4.5 114.3
VTB(A/C)4- 6- 2/X***	4.0 101.6	6.0 152.4	4.0 101.6	2.0 50.8	9.5 241.3	2.0 50.8	0.99 25.1	0.25 6.4	2.25 57.1	2.25 57.1	4.5 114.3
VTB(A/C)4-10- 4/X***	4.0 101.6	10.0 254.0	6.0 152.4	4.0 25.4	13.5 342.9	2.0 50.8	0.99 25.1	0.25 6.4	2.25 57.1	2.25 57.1	4.5 114.3
VTB(A/C)4- 14-6/X***	4.0 101.6	14.0 355.6	8.0 203.2	6.0 152.4	17.5 444.5	2.0 50.8	0.99 25.1	0.25 6.4	2.25 57.1	2.25 57.1	4.5 114.3

*** = 16mm OD ROLLED BS LEAD: **RB** = 2mm, 5mm (< .003 BACKLASH); 5/8" OD SCREW LEAD: **L** = .050", .100", .200", .500", 2.00".
 16mm OD GROUND BS LEAD: **GB** = .100", .200", 5mm, 10mm, 20mm; 1/2" OD UL SCREW LEAD: **U** = .025", .050", .100", .200", 1mm, 2mm, 5mm.
 * G = 1.00" WHEN 'U' OPTION SELECTED

MODEL	A	B	C	D	E	F	G*	H	J	K	W
VTA(A/C)4- 7- 1/X***	4.0 101.6	7.0 177.8	6.0 152.4	1.0 25.4	9.65 245.1	1.44 36.6	0.63 15.9	0.25 6.4	1.77 45.0	2.25 57.1	4.5 114.3
VTA(A/C)4- 8- 2/X***	4.0 101.6	8.0 203.2	6.0 152.4	2.0 50.8	10.65 270.5	1.44 36.6	0.63 15.9	0.25 6.4	1.77 45.0	2.25 57.1	4.5 114.3
VTA(A/C)4-12- 4/X***	4.0 101.6	12.0 304.8	8.0 203.2	4.0 101.6	14.65 372.1	1.44 36.6	0.63 15.9	0.25 6.4	1.77 45.0	2.25 57.1	4.5 114.3
VTA(A/C)4-16- 6/X***	4.0 101.6	16.0 406.4	10.0 254.0	6.0 152.4	18.65 473.7	1.44 36.6	0.63 15.9	0.25 6.4	1.77 45.0	2.25 57.1	4.5 114.3

*** = 12mm OD ROLLED BS LEAD: **RB** = 2mm, 4mm (< .003 BACKLASH); 3/8" OD SCREW LEAD: **L** = .025, .050", .100", .200", .500", 2mm, 5mm, 25mm. 12mm OD GROUND BS LEAD: **GB** = .100", 2.5mm; 1/4" OD UL SCREW LEAD: **U** = .025", .050", .100", .200", 1mm, 2mm.

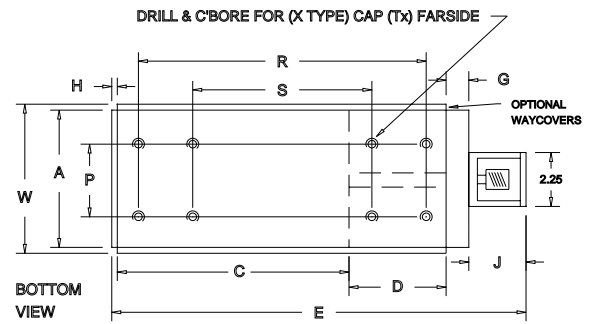
MODEL	A	B	C	D	E	F	G	H	J	K	W
VTR(A/C)4- 6- 2/X***	4.0 101.6	6.0 152.4	4.0 101.6	2.0 50.8	9.5 241.3	2.44 61.9	0.99 25.1	0.25 6.4	2.25 57.1	2.25 57.1	4.5 114.3
VTR(A/C)4-10- 4/X***	4.0 101.6	10.0 254.0	6.0 152.4	4.0 50.8	13.5 349.9	2.44 61.9	0.99 25.1	0.25 6.4	2.25 57.1	2.25 57.1	4.5 114.3
VTR(A/C)4-14- 6/X***	4.0 101.6	14.0 355.6	8.0 203.2	6.0 152.4	17.5 444.5	2.44 61.9	0.99 25.1	0.25 6.4	2.25 57.1	2.25 57.1	4.5 114.3
VTR(A/C)4-18- 8/X***	4.0 101.6	18.0 457.2	10.0 254.0	8.0 203.2	21.5 546.1	2.44 61.9	0.99 25.1	0.25 6.4	2.25 57.1	2.25 57.1	4.5 114.3
VTR(A/C)4-22-10/X***	4.0 101.6	22.0 558.8	12.0 304.8	10.0 254.0	25.5 647.7	2.44 61.9	0.99 25.1	0.25 6.4	2.25 57.1	2.25 57.1	4.5 114.3
VTR(A/C)4-26-12/X***	4.0 101.6	26.0 660.4	14.0 355.6	12.0 304.8	29.5 749.3	2.44 61.9	0.99 25.1	0.25 6.4	2.25 57.1	2.25 57.1	4.5 114.3

*** = 16mm OD ROLLED BS LEAD: **RB** = 2mm, 5mm (< .003 BACKLASH); 5/8" OD SCREW LEAD: **L** = .050", .100", .200", .500", 2.00".
 1/2" OD UL SCREW LEAD: **U** = .025", .050", .100", .200", 1mm, 2mm, 5mm.

NEMA 23 SIZE MOTOR MOUNT AND ALUMINUM FLEXIBLE COUPLING SUPPLIED AS STANDARD

OPTIONS: MECHANICAL OR OPTICAL HOME/LIMIT SWITCHES, WAYCOVERS (LENGTH & WIDTH INCREASE), MOTOR MOUNT SIZE, CUSTOM MOUNTING PROVISIONS, BLACK ANODIZE, ELECTROLESS NICKEL, MOTOR CLEARANCE PLATES.

FEATURE APPLICATION SPECIFIC DRIVE SCREWS



A = ALUMINUM C = CAST IRON

X = 'GB' FOR GROUND BALLSCREW; 'UL' FOR GROUND LEADSCREW; (.0004"/FT LEAD ACCURACY)

M	N	O	P	R	S	T	X	Y	RAIL SET	WEIGHT (LBS)		MAX * LOAD	MODEL
										A	C		
3.000 76.20	3.000 76.20	1/4-20 (M6x1)	2.000 50.80	4.000 101.60		4	1/4" LH (M6)	5.00 127.0	RS118-04P/17	3.8	8.2	232	VTB(A/C)4- 5- 1/X***
3.000 76.20	3.000 76.20	1/4-20 (M6x1)	2.000 50.80	5.000 127.00		4	1/4" LH (M6)	5.00 127.0	RS118-04P/15	4.3	9.6	232	VTB(A/C)4- 6- 2/X***
3.000 76.20	5.000 127.00	1/4-20 (M6x1)	2.000 50.80	8.000 203.20		4	1/4" LH (M6)	5.00 127.0	RS118-06P/19	6.5	13.8	280	VTB(A/C)4-10- 4/X***
3.000 76.20	6.000 152.40	1/4-20 (M6x1)	2.000 50.80	12.000 304.80	6.000 152.40	8	1/4" LH (M6)	5.00 127.0	RS118-08P/24	7.4	17.0	338	VTB(A/C)4-14- 6/X***

HORIZONTAL ATTITUDE NO-LOAD TORQUE REQUIREMENTS: BREAKAWAY = 6 - 16 OZ/IN; CONSTANT SPEED = 6 - 12 OZ/IN
CRITICAL SPEED LIMIT: LEADSCREWS = 3600 RPM's; BALLSCREWS = 4000 RPM's; UNIVERSAL LEADSCREW = 1200 RPM's

M	N	O	P	R	S	T	X	Y	RAIL SET	WEIGHT (LBS)		MAX * LOAD	MODEL
										A	C		
3.000 76.20	5.000 127.00	1/4-20 (M6x1)	1.750 44.45	6.000 152.40		4	1/4" LH (M6)	5.00 127.0	RS236-04P/10	7.4	14.1	320	VTA(A/C)4- 7- 1/X***
3.000 76.20	5.000 127.00	1/4-20 (M6x1)	1.750 44.45	7.000 177.80		4	1/4" LH (M6)	5.00 127.0	RS236-04P/08	6.8	13.7	300	VTA(A/C)4- 8- 2/X***
3.000 76.20	6.000 152.40	1/4-20 (M6x1)	1.750 44.45	10.000 254.00		4	1/4" LH (M6)	5.00 127.0	RS236-06P/11	9.0	17.9	340	VTA(A/C)4-12- 4/X***
3.000 76.20	8.000 203.20	1/4-20 (M6x1)	1.750 44.45	14.000 355.60	6.000 152.4	8	1/4" LH (M6)	5.00 127.0	RS236-08P/14	12.8	25.6	410	VTA(A/C)4-16- 6/X***

HORIZONTAL ATTITUDE NO-LOAD TORQUE REQUIREMENTS: BREAKAWAY = 4 - 10 OZ/IN; CONSTANT SPEED = 3 - 7 OZ/IN
CRITICAL SPEED LIMIT: LEADSCREWS = 1800 RPM's; BALLSCREWS = 3000 RPM's; UNIVERSAL LEADSCREW = 800 RPM's

M	N	O	P	R	S	T	X	Y	RAIL SET	WEIGHT (LBS)		MAX * LOAD	MODEL
										A	C		
3.000 76.20	3.000 76.20	1/4-20 (M6x1)	1.750 44.45	5.000 127.00		4	1/4" LH (M6)	5.00 127.0	RS236-04P/08	8.3	23.2	300	VTR(A/C)4- 6- 2/X***
3.000 76.20	5.000 127.00	1/4-20 (M6x1)	1.750 44.45	8.000 203.20		4	1/4" LH (M6)	5.00 127.0	RS236-06P/11	12.4	28.7	340	VTR(A/C)4-10- 4/X***
3.000 76.20	6.000 152.40	1/4-20 (M6x1)	1.750 44.45	12.000 304.80	6.000 152.40	8	1/4" LH (M6)	5.00 127.0	RS236-08P/14	15.7	37.3	400	VTR(A/C)4-14- 6/X***
3.000 76.20	8.000 203.20	1/4-20 (M6x1)	1.750 44.45	16.000 406.40	8.000 203.20	8	1/4" LH (M6)	5.00 127.0	RS236-10P/17	19.1	44.1	460	VTR(A/C)4-18- 8/X***
3.000 76.20	10.000 254.00	1/4-20 (M6x1)	1.750 44.45	18.000 457.20	10.000 254.00	8	1/4" LH (M6)	5.00 127.0	RS236-12P/20	23.7	52.3	460	VTR(A/C)4-22-10/X***
3.000 76.20	12.000 304.80	1/4-20 (M6x1)	1.750 44.45	22.000 558.80	10.000 254.00	8	1/4" LH (M6)	5.00 127.0	RS236-14P/23	30.0	60.2	510	VTR(A/C)4-26-12/X***

HORIZONTAL ATTITUDE NO-LOAD TORQUE REQUIREMENTS: BREAKAWAY = 4 - 10 OZ/IN; CONSTANT SPEED = 3 - 7 OZ/IN
CRITICAL SPEED LIMIT: LEADSCREWS = 3600 RPM's; BALLSCREWS = 4000 RPM's; UNIVERSAL LEADSCREW = 1200 RPM's

* MAXIMUM LOAD CALCULATION INCLUDES SAFETY FACTOR AND AXIAL FORCES.