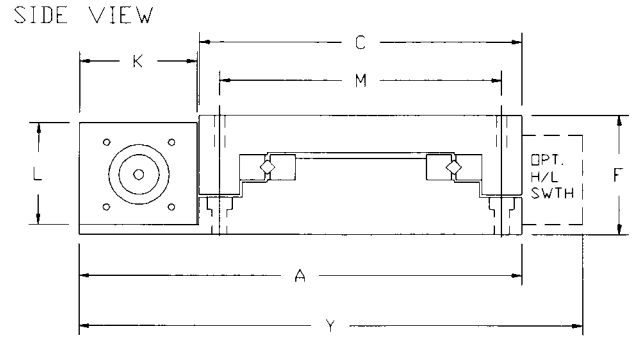
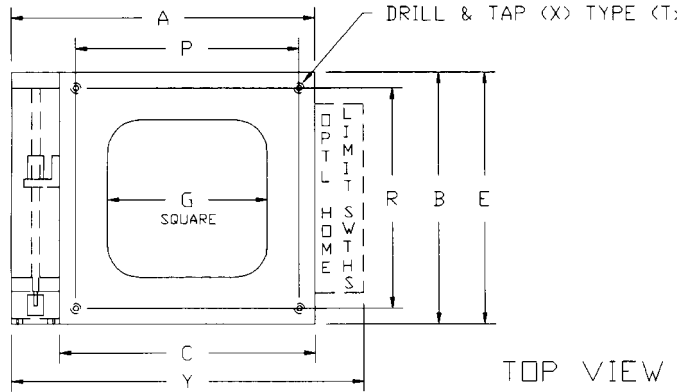


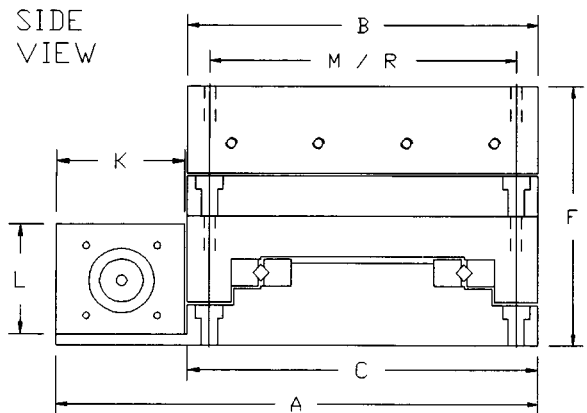
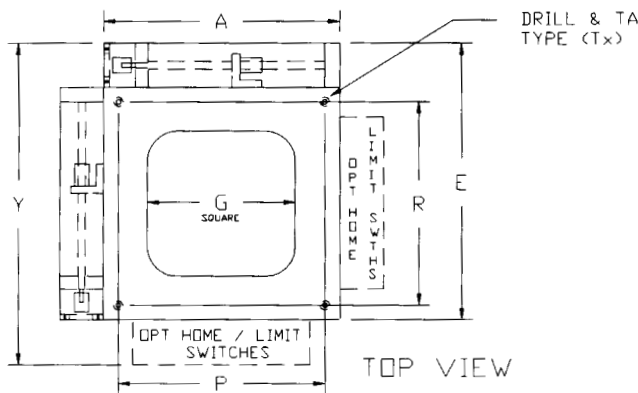
SD SERIES MOTOR READY STAGES FEATURE SOLID OR OPEN FRAME AND ANTI-BACKLASH PRECISION SCREWS



Z = 'S' FOR SOLID TOP; 'O' FOR OPEN FRAME

MODEL	A WIDTH	B PL L	C PL W	D TRAVEL	E OAL	F HEIGHT	G WIN	K MB W	L MB H
SDS(Z) 8-2/X***	11.0 279.4	8.0 203.2	8.0 203.2	2.0 50.8	8.0 203.2	2.75 69.9	3.5 88.9	2.88 73.2	2.38 57.2
SDS(Z) 14-6/X***	17.0 431.8	14.0 355.6	14.0 355.6	6.0 152.4	14.0 355.6	2.75 69.9	8.0 203.2	2.88 73.2	2.38 57.2
SDS(Z) 20-12/X***	23.0 584.2	20.0 508.0	20.0 508.0	12.0 304.8	20.0 508.0	2.75 69.9	14.0 355.6	2.88 73.2	2.38 57.2

SD SERIES X-Y MOTOR READY STAGES



Z = 'S' FOR SOLID TOP; 'O' FOR OPEN FRAME

MODEL	A WIDTH	B PL L	C PL W	D TRAVEL	E OAL	F HEIGHT	G WIN	K MB W	L MB H
SDD(Z) 8-2/X***	11.0 279.4	8.0 203.2	8.0 203.2	2 x 2	11.0 279.4	5.50 139.7	3.5 88.9	2.88 73.2	2.38 57.2
SDD(Z) 14-6/X***	17.0 431.8	14.0 355.6	14.0 355.6	6 x 6	17.0 431.8	5.50 139.7	8.0 203.2	2.88 73.2	2.38 57.2
SDD(Z) 20-12/X***	23.0 584.2	20.0 508.0	20.0 508.0	12 x 12	23.0 584.2	5.50 139.7	14.0 355.6	2.88 73.2	2.38 57.2

X = 'B' FOR GROUND BALLSCREW (.0003"/FT ACCURACY GRADE); 'U' FOR UNIVERSAL GROUND LEADSCREW (.0004"/FT ACCURACY GRADE)

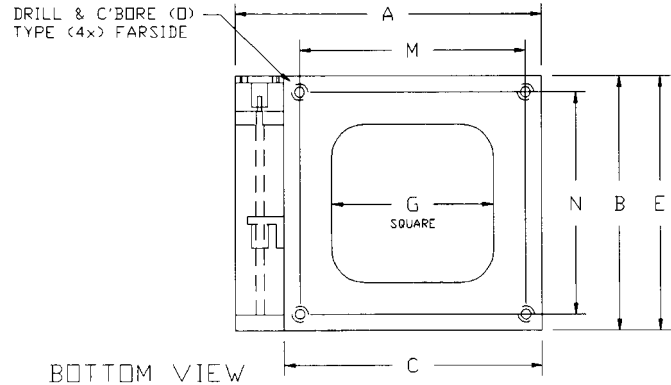
*** = 15mm OD BALLSCREW THREAD LEAD: .100", .200", 5mm, 10mm, 20mm LEAD

*** = 1/2" OD UNIVERSAL LEADSCREW THREAD LEAD: .025", .050", .100", .200", .400", .800", 1mm, 2mm, 5mm LEAD

*** = 5/8" OD LEADSCREW THREAD LEAD: .050", .100", .200", .500" LEAD

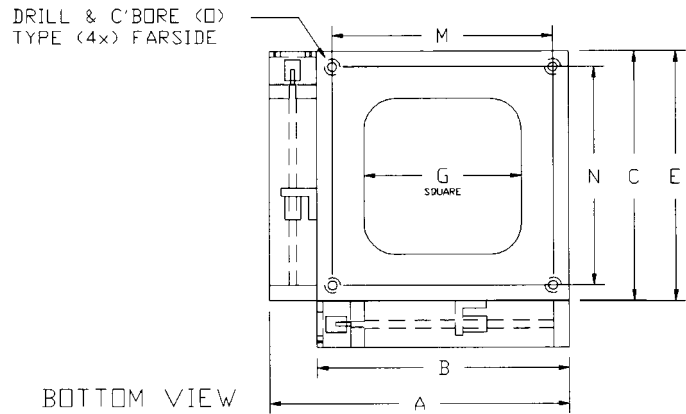
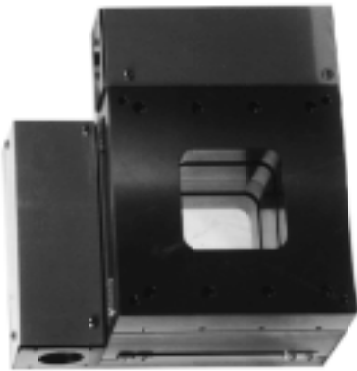
ALUMINUM MOUNTING PLATES, BLACK ANODIZE FINISH, NEMA 23 SIZE MOTOR MOUNT, PROTECTIVE LEADSCREW COVER, OPTIONS: SIDE MOUNTED OPTICAL HOME/LIMIT SWITCHES, DC SERVO MOTOR MOUNTS, METRIC/CUSTOM MOUNTING PROVISIONS

SD SERIES MOTOR READY STAGES FEATURE SOLID OR OPEN FRAME AND ANTI-BACKLASH PRECISION SCREWS



M FP MH	N FP MH	O FP MH	P AP MH	R AP MH	T AP MH	X AP MH	Y AP MH	RAIL SET	WEIGHT (LBS.)		MAX CC (LBS)	MODEL
									S	O		
7.0 63.5	7.0 63.5	5/16" (M8)	7.0 63.5	7.0 57.2	4	1/4-20 (M6x1.0)	12.5 317.5	RS236-08P/20	23	17	432	SDS(Z) 8-2/X***
13.0 88.9	13.0 88.9	5/16" (M8)	13.0 88.9	13.0 57.2	6	1/4-20 (M6x1.0)	18.5 469.9	RS236-14P/32	40	30	672	SDS(Z) 14-6/X***
19.0 114.3	19.0 114.3	5/16" (M8)	19.0 114.3	19.0 114.3	6	1/4-20 (M6x1.0)	24.5 622.3	RS236-20P/40	57	43	912	SDS(Z) 20-12/X***

SD SERIES X-Y MOTOR READY STAGES



M FP MH	N FP MH	O FP MH	P AP MH	R AP MH	T AP MH	X AP MH	Y AP MH	RAIL SET	WEIGHT (LBS.)		MAX CC (LBS)	MODEL
									S	O		
7.0 63.5	7.0 63.5	5/16" (M8)	7.0 63.5	7.0 57.2	4	1/4-20 (M6x1.0)	12.5 317.5	RS236-08P/20	46	34	432	SDD(Z) 8-2/X***
13.0 88.9	13.0 88.9	5/16" (M8)	13.0 88.9	13.0 57.2	6	1/4-20 (M6x1.0)	18/5 469.9	RS236-14P/32	80	60	672	SDD(Z) 14-6/X***
19.0 114.3	19.0 114.3	5/16" (M8)	19.0 114.3	19.0 114.3	6	1/4-20 (M6x1.0)	24.5 622.3	RS236-20P/40	115	85	912	SDD(Z) 20-12/X***

X = 'L' FOR ROLLED LEADSCREW (.003"/FT ACCURACY GRADE)

HORIZONTAL ATTITUDE NO-LOAD TORQUE REQUIRMENTS (BALLSCREW): BREAKAWAY = 8-14 OZ/IN; CONSTANT SPEED = 6-12 OZ/IN
 CRITICAL SPEED LIMIT: BALLSCREWS, ROLLED LEADSCREW = 4000 RPM'S; UNIVERSAL LEADSCREW = 1200 RPM'S AND FLEXIBLE
 COUPLING SUPPLIED AS STANDARD