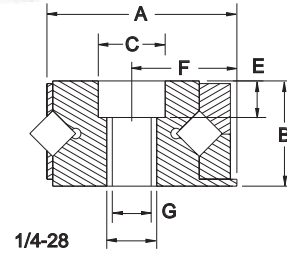
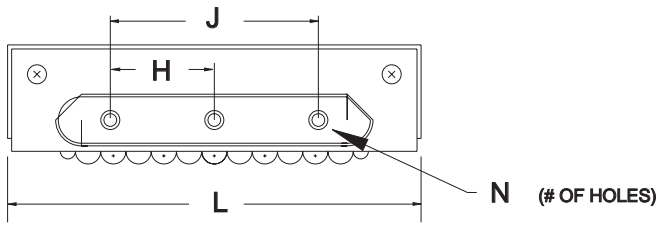
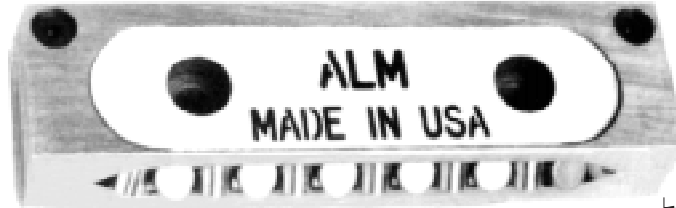


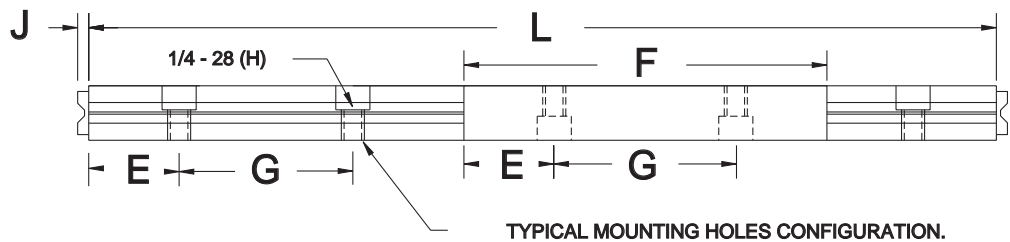
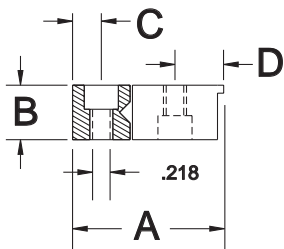
RECIRCULATING BEARING COMPONENTS



MODEL #	BEARING DIAMETER	L LENGTH	A WIDTH	B HEIGHT	N	C	E	F	G	H	J
RC4	.236 6.0	3.937 100.0	1.01 25.7	.591 15.0	2	.375 9.5	.205 5.2	.591 15.0	.218 5.5	1.969 50.0	1.969 50.0
RC6	.236 6.0	5.818 148.0	1.01 25.7	.591 15.0	3	.375 9.5	.205 5.2	.591 15.0	.218 5.5	1.969 50.0	3.937 100.0

* METRIC THREADS AVAILABLE UPON REQUEST; COEFFICIENT OF FRICTION = .005

RECIRCULATOR RAIL SETS



SET NO.	A	B	C	D	E	F	G	NO. OF RAIL MOUNTING HOLES	J	L	H	
RC4RS-10								5		9.844	250.0	
RC4RS-12								6		11.813	300.0	
RC4RS-14	1.560	.591	.239	.591	.984	3.937	1.969	7	.120	13.782	350.0	1/4 - 28
RC4RS-16								8		15.751	400.0	
RC4RS-18								9		17.720	450.0	
RC4RS-20	39.9	15.0	6.1	15.0	25.0	100.0	50.0	10	30	19.689	500.0	
RC4RS-22								11		21.658	550.0	
RC4RS-24								12		23.627	600.0	
RC6RS-12								6		11.813	300.0	
RC6RS-14	1.572	.591	.239	.591	.984	5.818	1.969	7	.120	13.782	350.0	1/4 - 28
RC6RS-16								8		15.751	400.0	
RC6RS-18								9		17.720	450.0	
RC6RS-20								10		19.689	500.0	
RC6RS-22	39.9	15.0	6.1	15.0	25.0	147.7	50.0	11	30	21.658	550.0	
RC6RS-24								12		23.627	600.0	

STANDARD SET INCLUDES (2) RECIRCULATING BEARINGS, (2) STANDARD RAILS & (4) ENDSCREWS