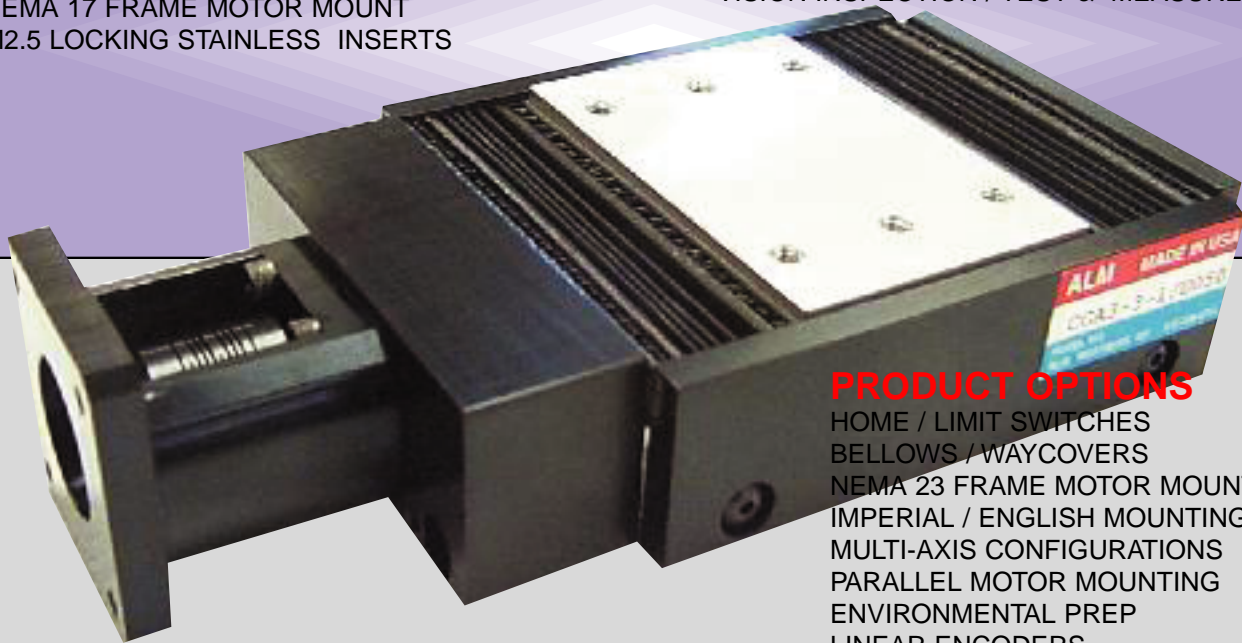


PRODUCT FEATURES

30mm WIDTH x 22mm HEIGHT
 STROKES TO 150mm (5.9")
 (1) LINEAR GUIDES; (1) PUCK (S/S)
 NEMA 17 FRAME MOTOR MOUNT
 M2.5 LOCKING STAINLESS INSERTS

APPLICATIONS

COMPONENT POSITIONING
 TOOLING FIXTURES
 LASER POSITIONING
 VISION INSPECTION / TEST & MEASUREMENT



PRODUCT OPTIONS

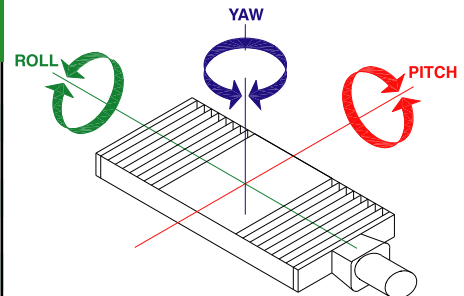
HOME / LIMIT SWITCHES
 BELLOWS / WAYCOVERS
 NEMA 23 FRAME MOTOR MOUNT
 IMPERIAL / ENGLISH MOUNTING HOLES
 MULTI-AXIS CONFIGURATIONS
 PARALLEL MOTOR MOUNTING
 ENVIRONMENTAL PREP
 LINEAR ENCODERS

Performance Specifications

Drive Screw Options

Screw Dependent	L (C7)	RB (C7)
Positional Accuracy – $\mu\text{m}/\text{mm}$ (x 0.001"/in)	6 (.00025)	20 (.0008)
Positional Repeatability – μm (0.001")	1 (.000045)	100 (.004)
Maximum Screw Speed – RPS *	20	35
Maximum Acceleration – mm/sec^2 – in/sec^2 #	9800 (386)	19600 (770)
Drive Screw Efficiency – %	20 – 80 +	90
Drive Screw Diameter – mm (in)	6.4 (.25)	6.0 (.24)
Breakaway Torque (No Load) – N-m (oz/in)	0,042 (6)	0,035 (5)
Constant Speed Torque – N-m (oz/in)	0,035 (5)	0,028 (4)
Axial Loading – Kgf (lbs)	4.5 (10)	20 (44)

(+ Fine leads minimize efficiency) (# Limited by maximum axial force) (* Speeds may be increased with support modifications)

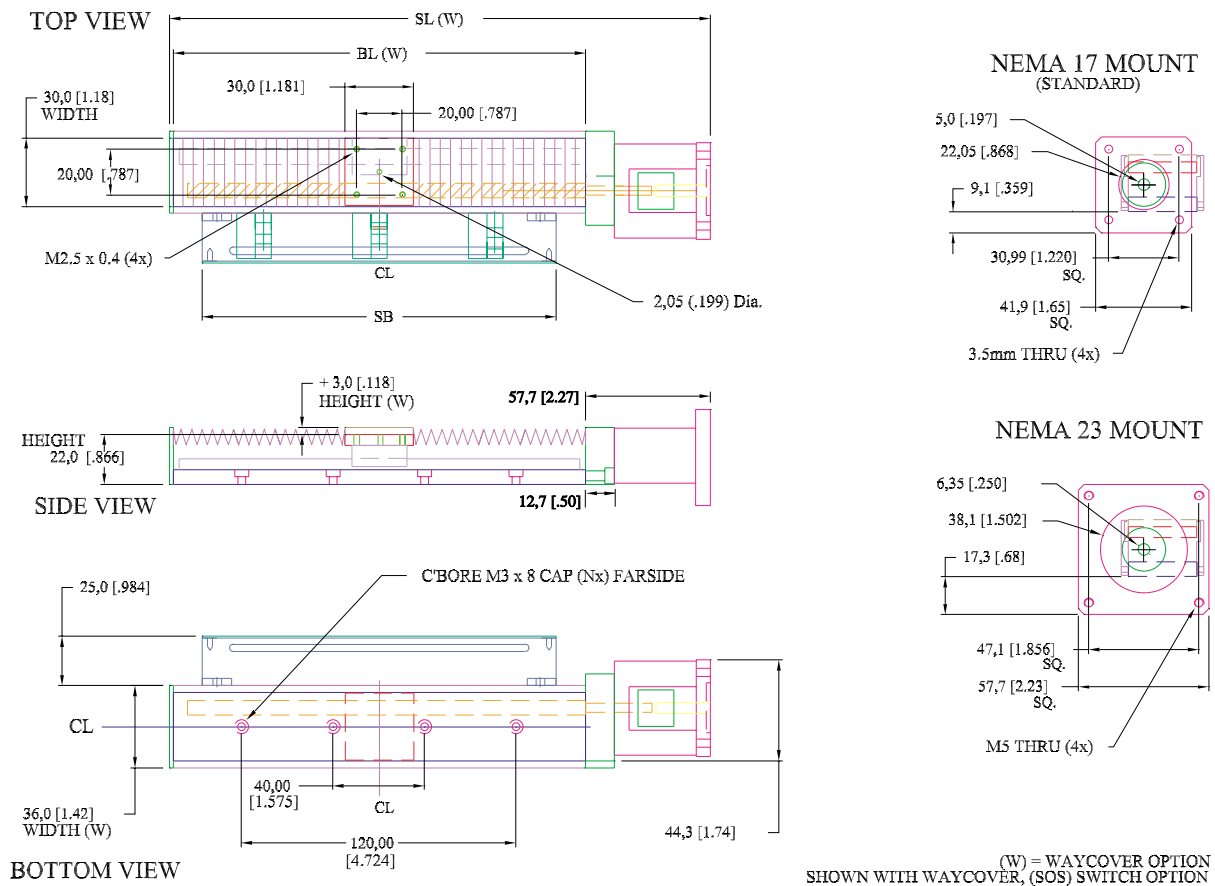


Stroke Length (in) Dependent	25 (.984)	50 (1.969)	75 (2.953)	100 (3.937)	125 (4.921)	150 (5.906)
Straightline Accuracy – μm (x 0.001")^A	15 (.59)	15 (.59)	15 (.59)	20 (.78)	22 (.85)	24 (.93)
Flatness of Travel – μm (x 0.001")^A	15 (.59)	15 (.59)	15 (.59)	20 (.78)	22 (.85)	24 (.93)
Table Weight – Kgf (lbs)	0,68 (1.5)	0,77 (1.7)	0,91 (2.0)	1,00 (2.2)	1,09 (2.4)	1,23 (2.7)

(^ higher grade accuracy available. Please consult factory)

Fixed Parameters

Static Horizontal Loading (on center) – Kgf (lbs)	13,6 (30)	Moment Loading (Pitch) – N-m (lb/ft)	3.9 (2.9)
Dynamic Horiz. Loading (on center) - Kgf (lbs)	4,5 (10)	Moment Loading (Yaw) – N-m (lb/ft)	3.9 (2.9)
Inverted Loading (on center) – Kgf (lbs)	4,5 (10)	Moment Loading (Roll) – N-m (lb/ft)	6.4 (4.7)
Per Bearing Load - Kgf (lbs)	109 (240)	Coefficient of Friction – %	0.02"
Inverted Per Bearing Load – Kgf (lbs)	109 (240)	Carriage Weight – Kgf (lbs)	0,03 (.06)



STROKE	SL	SLW	BL	BLW	N	SB
25	111 (4.37)	141 (5.55)	55 (2.165)	85 (3.346)	2	96 (3.78)
50	136 (5.35)	366 (6.53)	80 (3.150)	110 (4.331)	2	96 (3.78)
75	161 (6.34)	191 (7.52)	105 (4.134)	135 (5.315)	2	105 (4.13)
100	186 (7.32)	236 (9.29)	130 (5.118)	180 (7.087)	4	130 (5.12)
125	211 (8.31)	261 (10.28)	155 (6.102)	205 (8.071)	4	155 (6.10)
150	236 (9.29)	286 (11.26)	180 (7.087)	230 (9.055)	4	180 (7.09)



See How To Order On Page 17